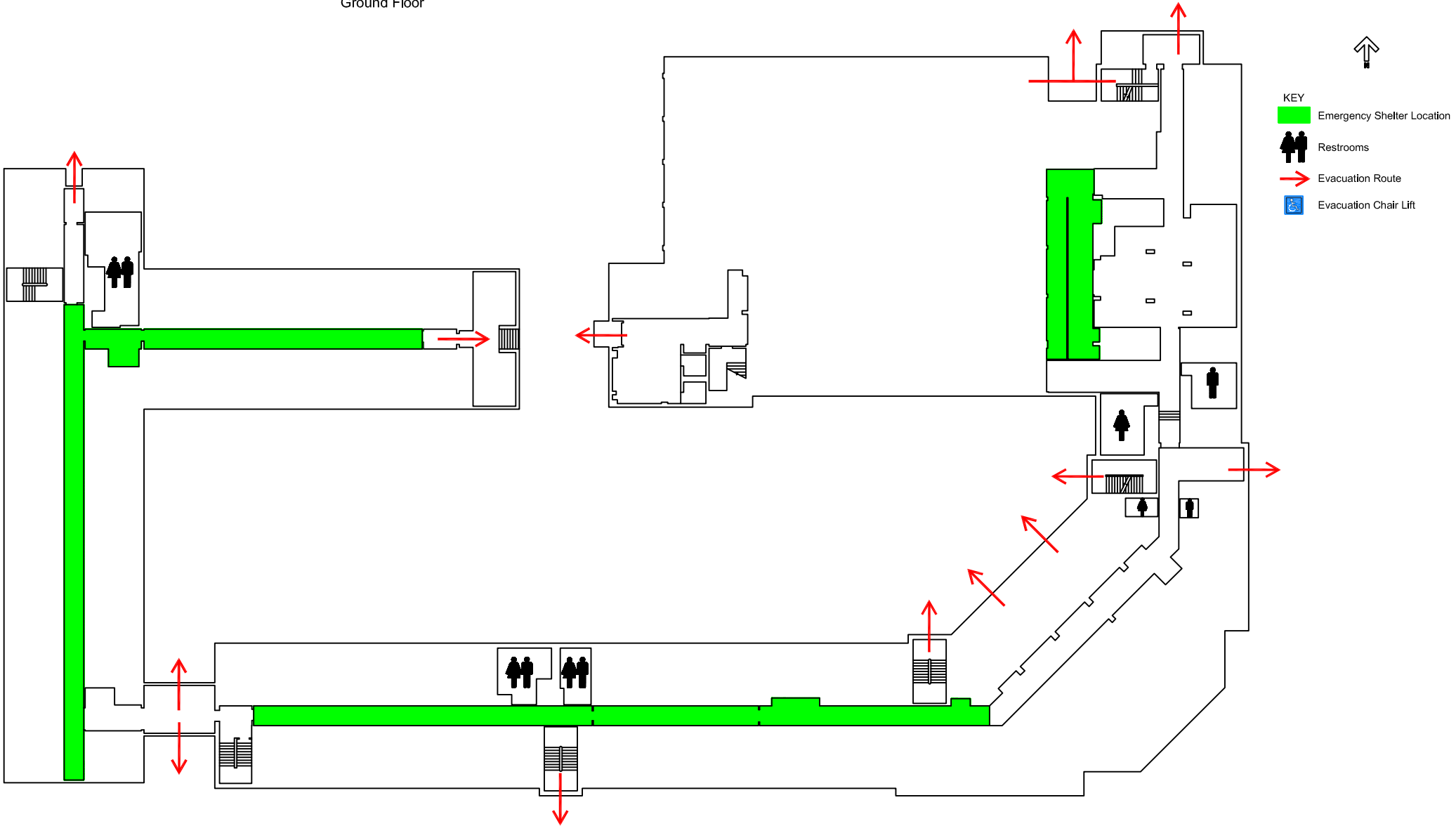






Campbell Hall Evacuation Map  
Ground Floor



- KEY**
-  Emergency Shelter Location
  -  Restrooms
  -  Evacuation Route
  -  Evacuation Chair Lift

EVACUATION GUIDELINES

- In case of fire or other emergency requiring evacuation, activate the nearest fire alarm pull station.
- Exit in a calm and orderly manner. Once you have evacuated to a safe location, immediately call 9-1-1.
- Assist injured persons and if time permits, make sure all doors are closed and hazardous work operations are shut down as you exit.
- Provide assistance to any person needing help evacuating the building.

SAFETY GUIDELINES





- Familiarize yourself with the location of exits, alarm pull stations and fire extinguishers.
- Only attempt to control a fire yourself with a fire extinguisher if you have been trained and the fire is small.
- Keep fire doors closed to prevent the spread of smoke and fire.

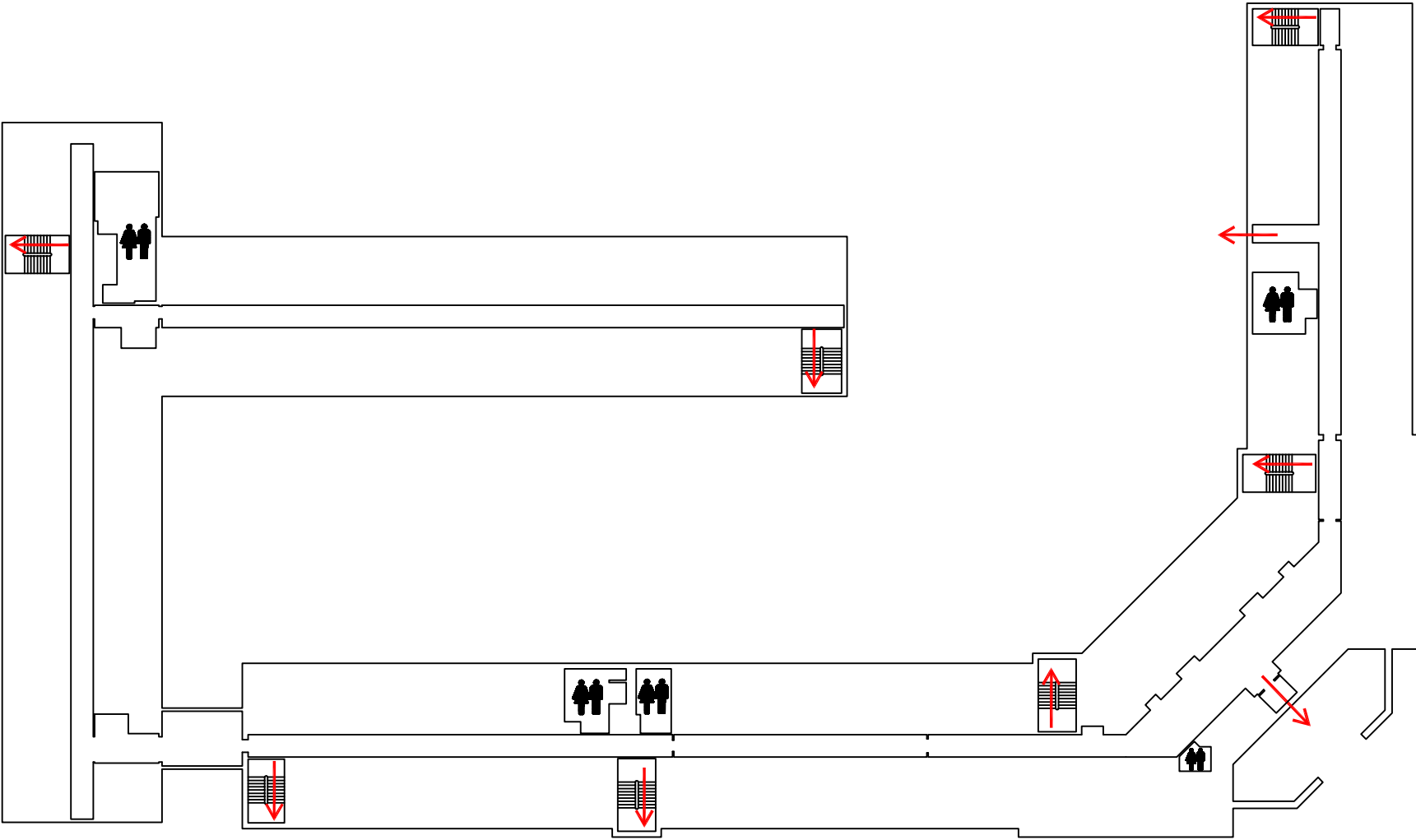
SEVERE WEATHER

- In the event of a tornado, proceed to the shelter locations. Keep away from exterior doors and windows.

Campbell Hall Evacuation Map  
First Floor







- KEY
-  Emergency Shelter Location
  -  Restrooms
  -  Evacuation Route
  -  Evacuation Chair Lift

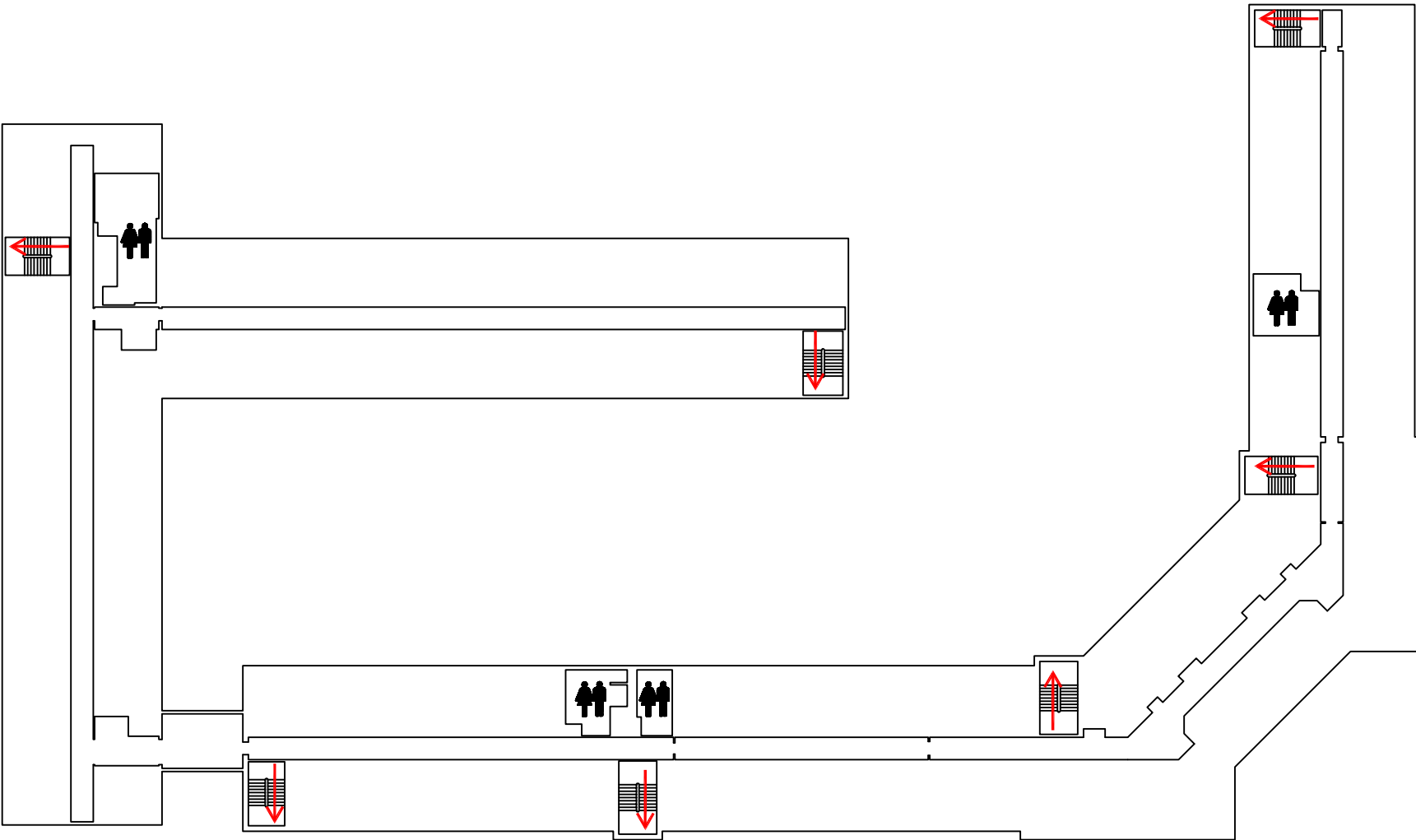


<p><b>EVACUATION GUIDELINES</b></p> <ul style="list-style-type: none"> <li>• In case of fire or other emergency requiring evacuation, activate the nearest fire alarm pull station.</li> <li>• Exit in a calm and orderly manner. Once you have evacuated to a safe location, immediately call 9-1-1.</li> <li>• Assist injured persons and if time permits, make sure all doors are closed and hazardous work operations are shut down as you exit.</li> <li>• Provide assistance to any person needing help evacuating the building.</li> </ul>	<p><b>SAFETY GUIDELINES</b></p> <ul style="list-style-type: none"> <li>• Familiarize yourself with the location of exits, alarm pull stations and fire extinguishers.</li> <li>• Only attempt to control a fire yourself with a fire extinguisher if you have been trained and the fire is small.</li> <li>• Keep fire doors closed to prevent the spread of smoke and fire.</li> </ul> <p><b>SEVERE WEATHER</b></p> <ul style="list-style-type: none"> <li>• In the event of a tornado, proceed to the shelter locations. Keep away from exterior doors and windows.</li> </ul>
---	--

Campbell Hall Evacuation Map  
Second Floor







- KEY
-  Emergency Shelter Location
  -  Restrooms
  -  Evacuation Route
  -  Evacuation Chair Lift

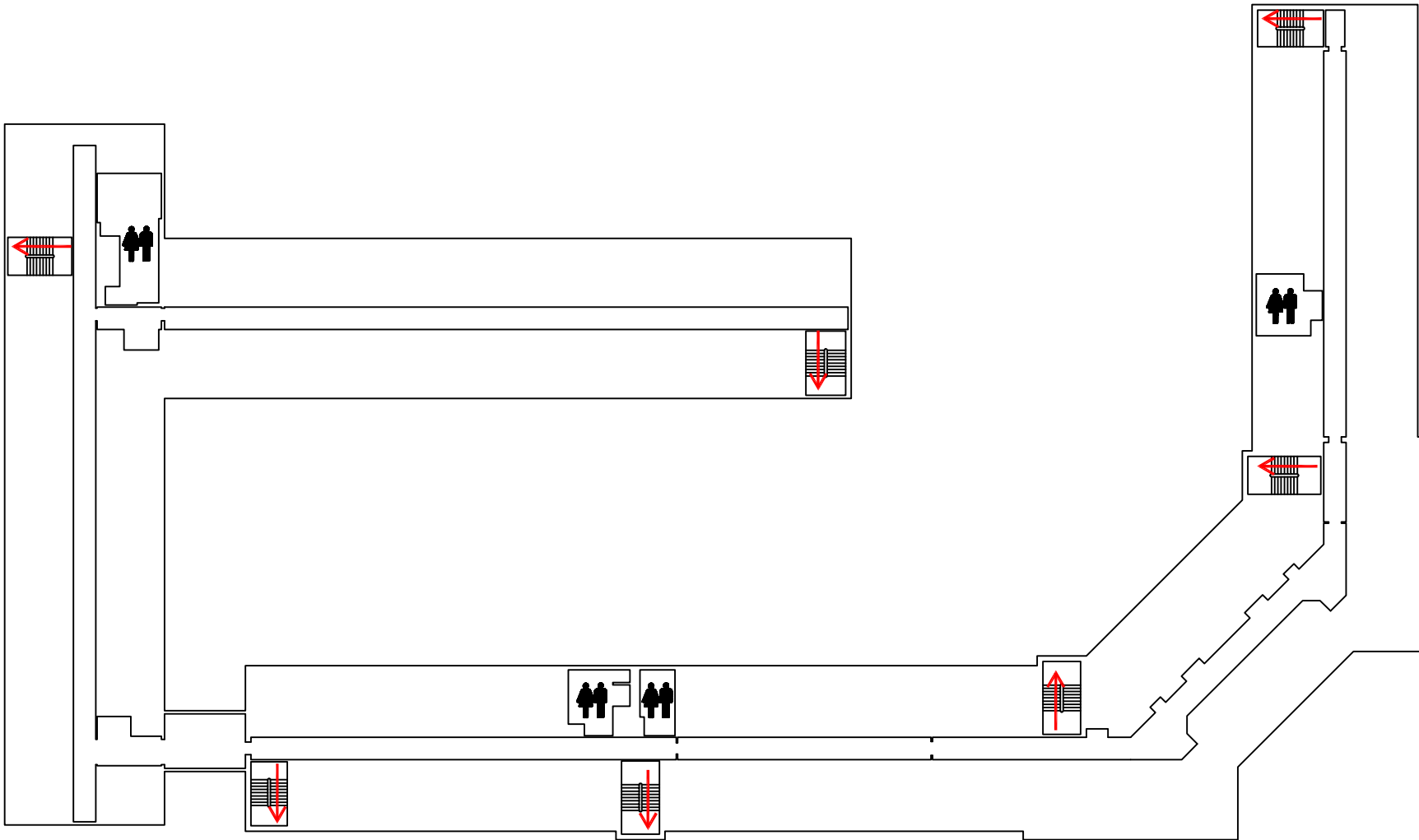


<p><u>EVACUATION GUIDELINES</u></p> <ul style="list-style-type: none"> <li>• In case of fire or other emergency requiring evacuation, activate the nearest fire alarm pull station.</li> <li>• Exit in a calm and orderly manner. Once you have evacuated to a safe location, immediately call 9-1-1.</li> <li>• Assist Injured persons and If time permits, make sure all doors are closed and hazardous work operations are shut down as you exit.</li> <li>• Provide assistance to any person needing help evacuating the building.</li> </ul>	<p><u>SAFETY GUIDELINES</u></p> <ul style="list-style-type: none"> <li>• Familiarize yourself with the location of exits, alarm pull stations and fire extinguishers.</li> <li>• Only attempt to control a fire yourself with a fire extinguisher if you have been trained and the fire is small.</li> <li>• Keep fire doors closed to prevent the spread of smoke and fire.</li> </ul> <p><u>SEVERE WEATHER</u></p> <ul style="list-style-type: none"> <li>• In the event of a tornado, proceed to the shelter locations. Keep away from exterior doors and windows.</li> </ul>
---	--

Campbell Hall Evacuation Map  
Third Floor



- KEY
-  Emergency Shelter Location
  -  Restrooms
  -  Evacuation Route
  -  Evacuation Chair Lift



<p><b>EVACUATION GUIDELINES</b></p> <ul style="list-style-type: none"> <li>• In case of fire or other emergency requiring evacuation, activate the nearest fire alarm pull station.</li> <li>• Exit in a calm and orderly manner. Once you have evacuated to a safe location, immediately call 9-1-1.</li> <li>• Assist Injured persons and If time permits, make sure all doors are closed and hazardous work operations are shut down as you exit.</li> <li>• Provide assistance to any person needing help evacuating the building.</li> </ul>	<p><b>SAFETY GUIDELINES</b></p> <ul style="list-style-type: none"> <li>• Familiarize yourself with the location of exits, alarm pull stations and fire extinguishers.</li> <li>• Only attempt to control a fire yourself with a fire extinguisher if you have been trained and the fire is small.</li> <li>• Keep fire doors closed to prevent the spread of smoke and fire.</li> </ul> <p><b>SEVERE WEATHER</b></p> <ul style="list-style-type: none"> <li>• In the event of a tornado, proceed to the shelter locations. Keep away from exterior doors and windows.</li> </ul>
---	--