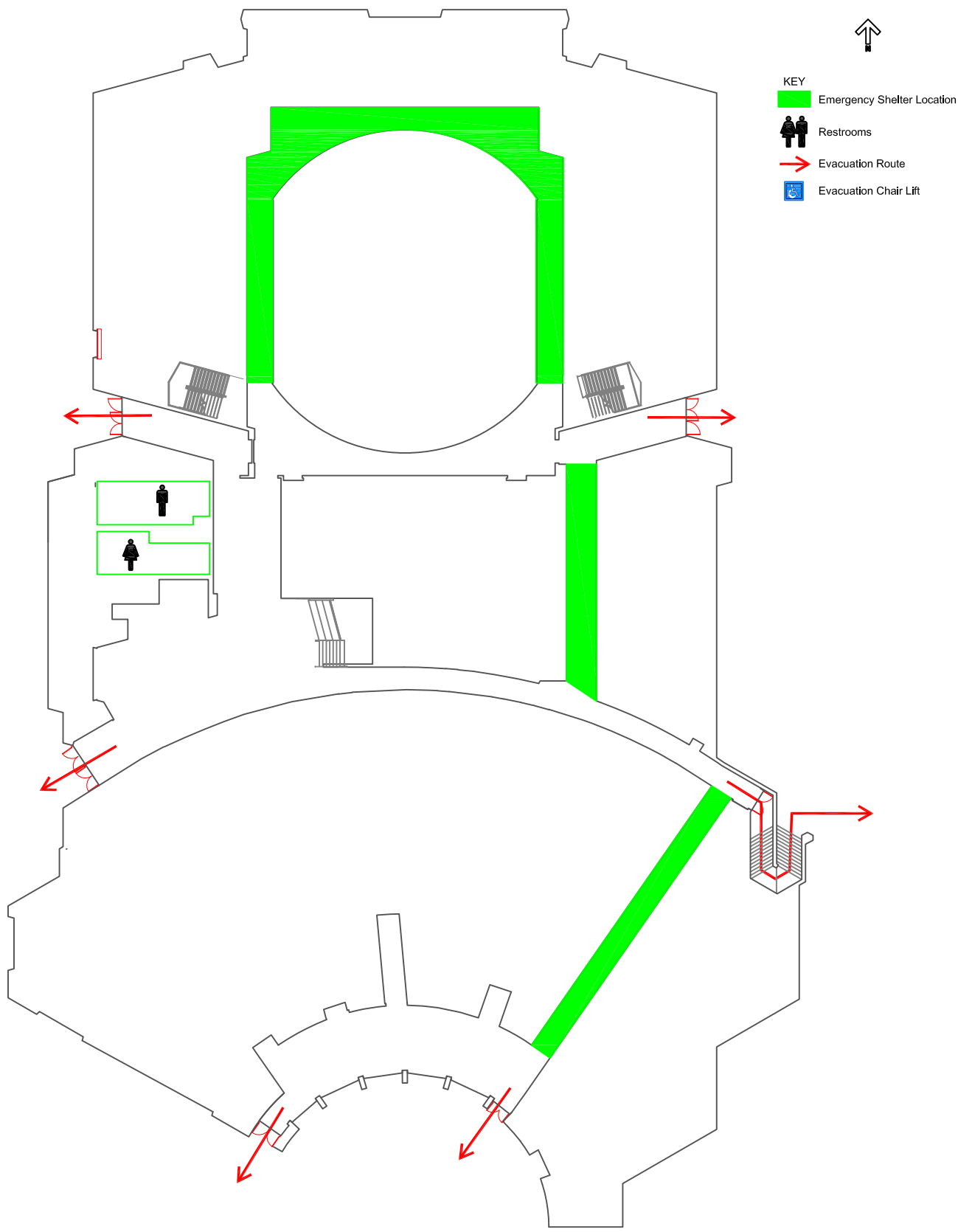


Schindler Education Center Evacuation Map  
First Floor



- KEY**
- Emergency Shelter Location
  - Restrooms
  - Evacuation Route
  - Evacuation Chair Lift

**EVACUATION GUIDELINES**

- In case of fire or other emergency requiring evacuation, activate the nearest fire alarm pull station.
- Exit in a calm and orderly manner. Once you have evacuated to a safe location, immediately call 9-1-1.
- Assist injured persons and if time permits, make sure all doors are closed and hazardous work operations are shut down as you exit.
- Provide assistance to any person needing help evacuating the building.

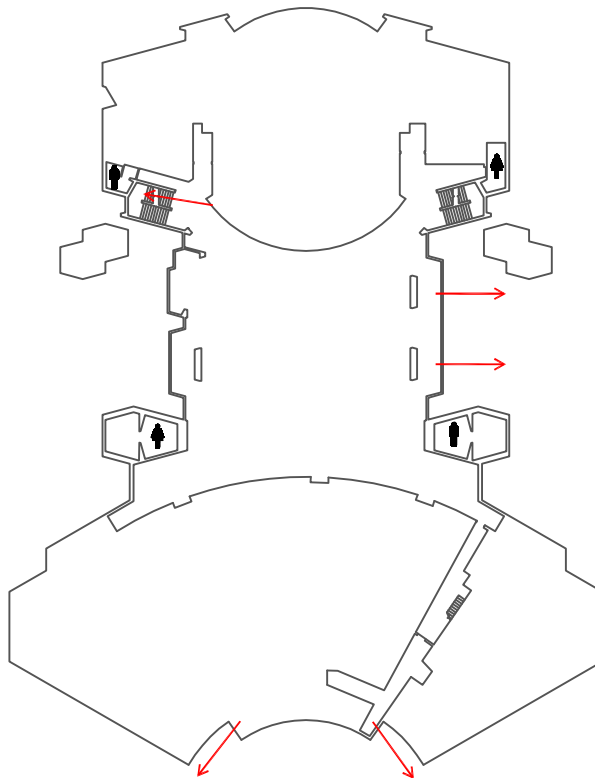
**SAFETY GUIDELINES**

- Familiarize yourself with the location of exits, alarm pull stations and fire extinguishers.
- Only attempt to control a fire yourself with a fire extinguisher if you have been trained and the fire is small.
- Keep fire doors closed to prevent the spread of smoke and fire.

**SEVERE WEATHER**

- In the event of a tornado, proceed to the shelter locations. Keep away from exterior doors and windows.

Schindler Education Center Evacuation Map  
Second Floor







- KEY
- Emergency Shelter Location
  - Restrooms
  - Evacuation Route
  - Evacuation Chair Lift

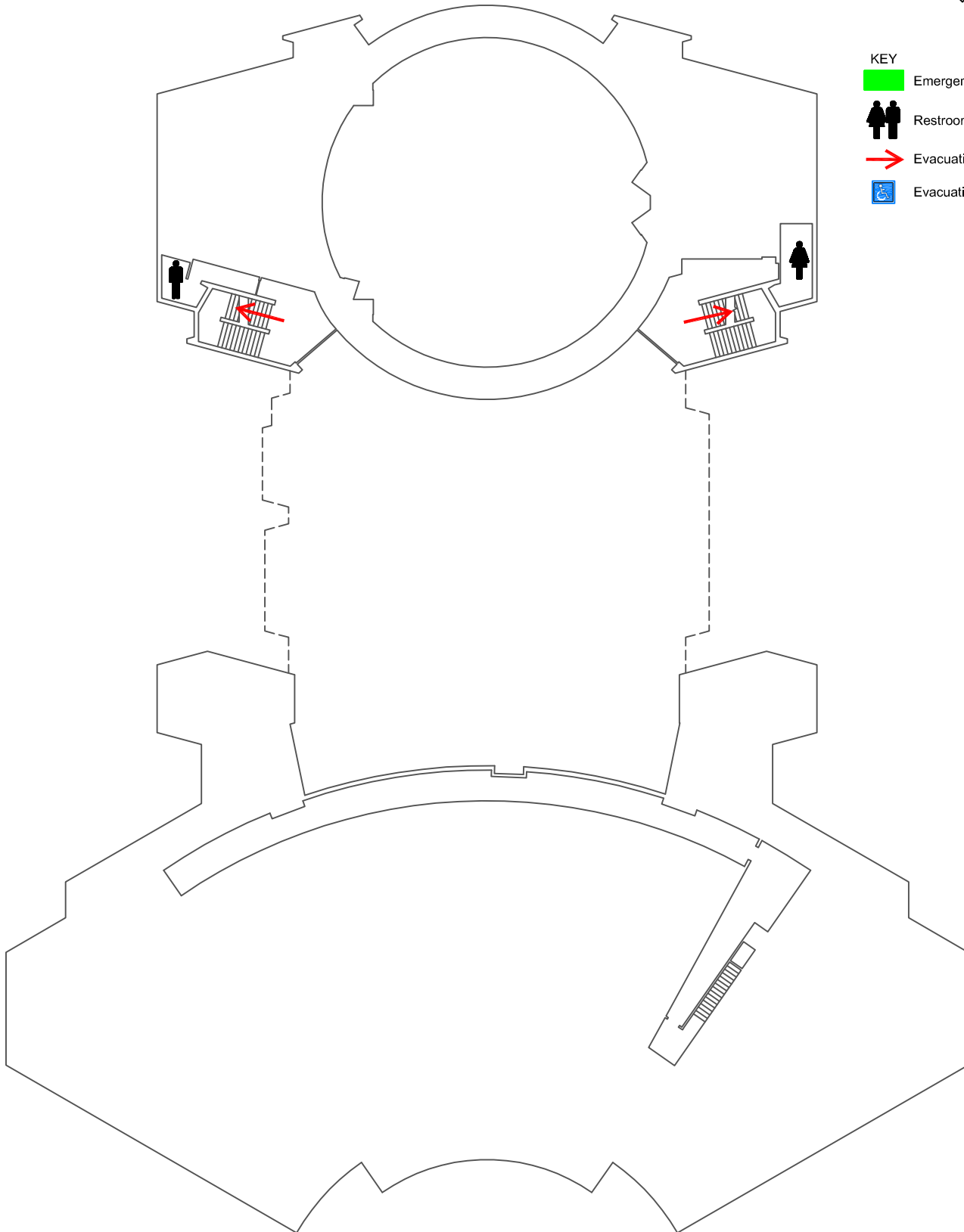
|   |  |
|---|--|
| <p><b>EVACUATION GUIDELINES</b></p> <ul style="list-style-type: none"> <li>• In case of fire or other emergency requiring evacuation, activate the nearest fire alarm pull station.</li> <li>• Exit in a calm and orderly manner. Once you have evacuated to a safe location, immediately call 9-1-1.</li> <li>• Assist injured persons and if time permits, make sure all doors are closed and hazardous work operations are shut down as you exit.</li> <li>• Provide assistance to any person needing help evacuating the building.</li> </ul> | <p><b>SAFETY GUIDELINES</b></p> <ul style="list-style-type: none"> <li>• Familiarize yourself with the location of exits, alarm pull stations and fire extinguishers.</li> <li>• Only attempt to control a fire yourself with a fire extinguisher if you have been trained and the fire is small.</li> <li>• Keep fire doors closed to prevent the spread of smoke and fire.</li> </ul> <p><b>SEVERE WEATHER</b></p> <ul style="list-style-type: none"> <li>• In the event of a tornado, proceed to the shelter locations. Keep away from exterior doors and windows.</li> </ul> |
|---|--|

Schindler Education Center Evacuation Map  
Third Floor



KEY

-  Emergency Shelter Location
-  Restrooms
-  Evacuation Route
-  Evacuation Chair Lift



EVACUATION GUIDELINES

- In case of fire or other emergency requiring evacuation, activate the nearest fire alarm pull station.
- Exit in a calm and orderly manner. Once you have evacuated to a safe location, immediately call 9-1-1.
- Assist injured persons and if time permits, make sure all doors are closed and hazardous work operations are shut down as you exit.
- Provide assistance to any person needing help evacuating the building.

SAFETY GUIDELINES





- Familiarize yourself with the location of exits, alarm pull stations and fire extinguishers.
- Only attempt to control a fire yourself with a fire extinguisher if you have been trained and the fire is small.
- Keep fire doors closed to prevent the spread of smoke and fire.

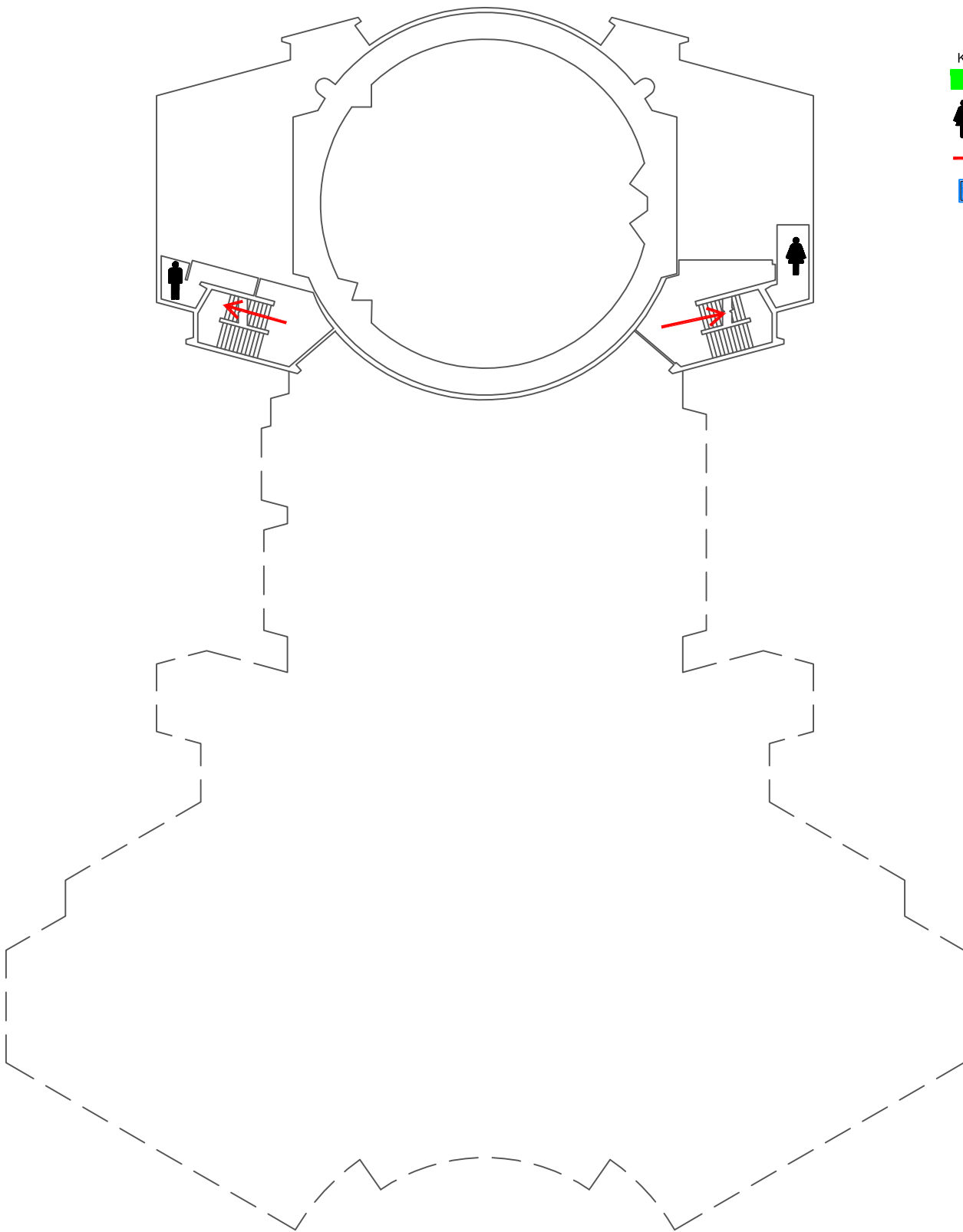
SEVERE WEATHER

- In the event of a tornado, proceed to the shelter locations. Keep away from exterior doors and windows.

Schindler Education Center Evacuation Map  
Fourth Floor



- KEY
-  Emergency Shelter Location
  -  Restrooms
  -  Evacuation Route
  -  Evacuation Chair Lift



**EVACUATION GUIDELINES**

- In case of fire or other emergency requiring evacuation, activate the nearest fire alarm pull station.
- Exit in a calm and orderly manner. Once you have evacuated to a safe location, immediately call 9-1-1.
- Assist injured persons and if time permits, make sure all doors are closed and hazardous work operations are shut down as you exit.
- Provide assistance to any person needing help evacuating the building.

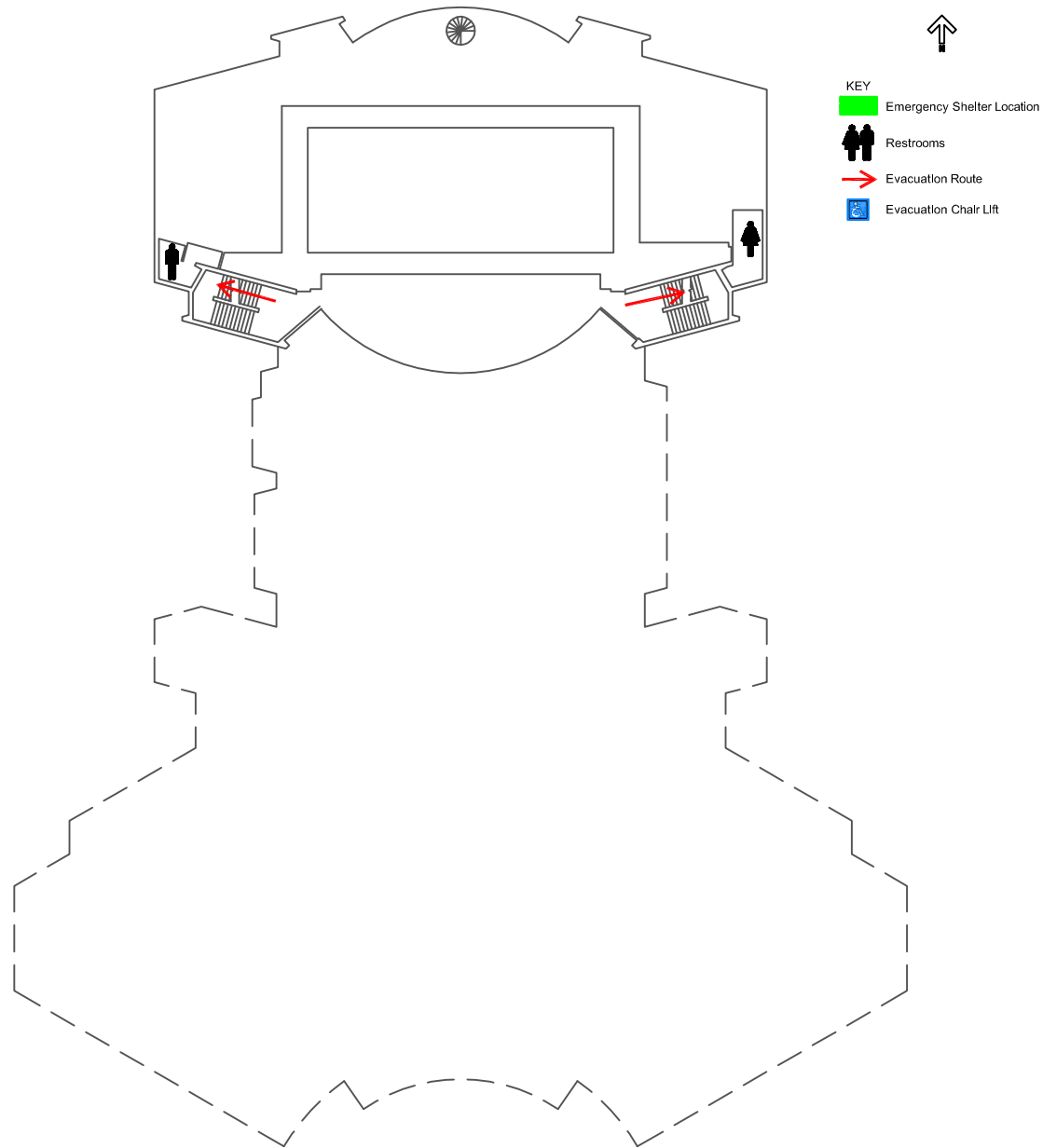
**SAFETY GUIDELINES**

- Familiarize yourself with the location of exits, alarm pull stations and fire extinguishers.
- Only attempt to control a fire yourself with a fire extinguisher if you have been trained and the fire is small.
- Keep fire doors closed to prevent the spread of smoke and fire.

**SEVERE WEATHER**

- In the event of a tornado, proceed to the shelter locations. Keep away from exterior doors and windows.

Schindler Education Center Evacuation Map  
Fifth Floor



**EVACUATION GUIDELINES**

- In case of fire or other emergency requiring evacuation, activate the nearest fire alarm pull station.
- Exit in a calm and orderly manner. Once you have evacuated to a safe location, immediately call 9-1-1.
- Assist injured persons and if time permits, make sure all doors are closed and hazardous work operations are shut down as you exit.
- Provide assistance to any person needing help evacuating the building.

**SAFETY GUIDELINES**

- Familiarize yourself with the location of exits, alarm pull stations and fire extinguishers.
- Only attempt to control a fire yourself with a fire extinguisher if you have been trained and the fire is small.
- Keep fire doors closed to prevent the spread of smoke and fire.

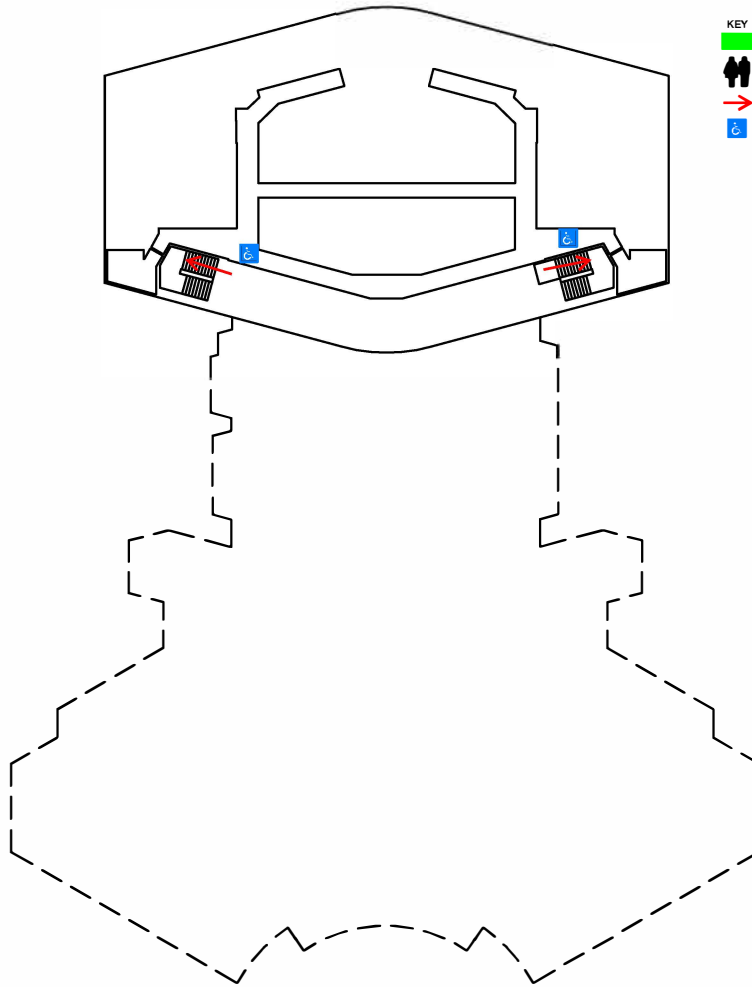
**SEVERE WEATHER**

- In the event of a tornado, proceed to the shelter locations. Keep away from exterior doors and windows.

Schindler Education Center Evacuation Map  
Sixth Floor



- KEY**
- Emergency Shelter Location
  - Restrooms
  - Evacuation Route
  - Evacuation Chair Lift



**EVACUATION GUIDELINES**

- In case of fire or other emergency requiring evacuation, activate the nearest fire alarm pull station.
- Exit in a calm and orderly manner. Once you have evacuated to a safe location, immediately call 9-1-1.
- Assist injured persons and if time permits, make sure all doors are closed and hazardous work operations are shut down as you exit.
- Provide assistance to any person needing help evacuating the building.

**SAFETY GUIDELINES**

- Familiarize yourself with the location of exits, alarm pull stations and fire extinguishers.
- Only attempt to control a fire yourself with a fire extinguisher if you have been trained and the fire is small.
- Keep fire doors closed to prevent the spread of smoke and fire.

**SEVERE WEATHER**

- In the event of a tornado, proceed to the shelter locations. Keep away from exterior doors and windows.