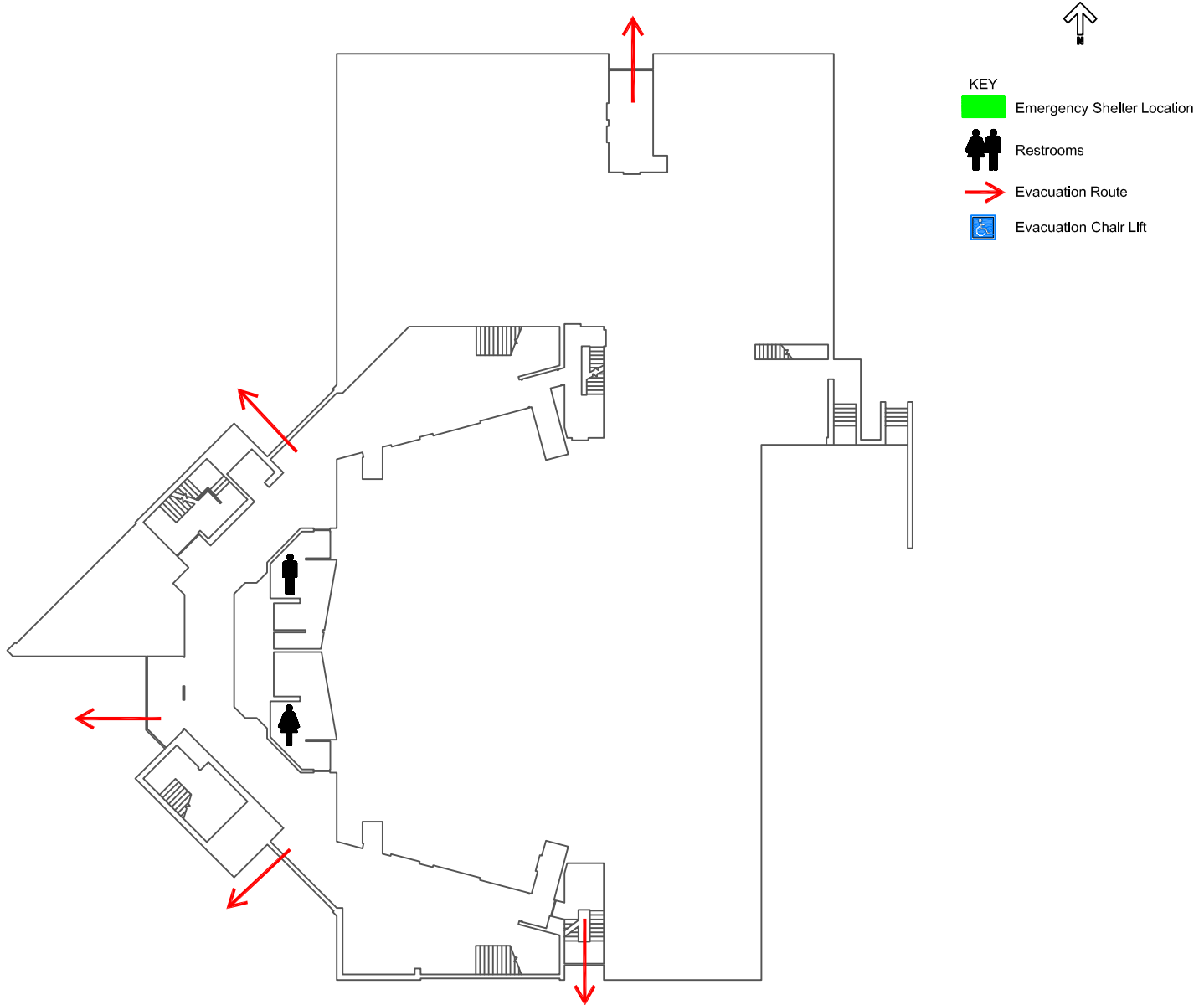


Strayer-Wood Theatre Evacuation Map
First Floor



EVACUATION GUIDELINES

- In case of fire or other emergency requiring evacuation, activate the nearest fire alarm pull station.
- Exit in a calm and orderly manner. Once you have evacuated to a safe location, immediately call 9-1-1.
- Assist injured persons and if time permits, make sure all doors are closed and hazardous work operations are shut down as you exit.
- Provide assistance to any person needing help evacuating the building.

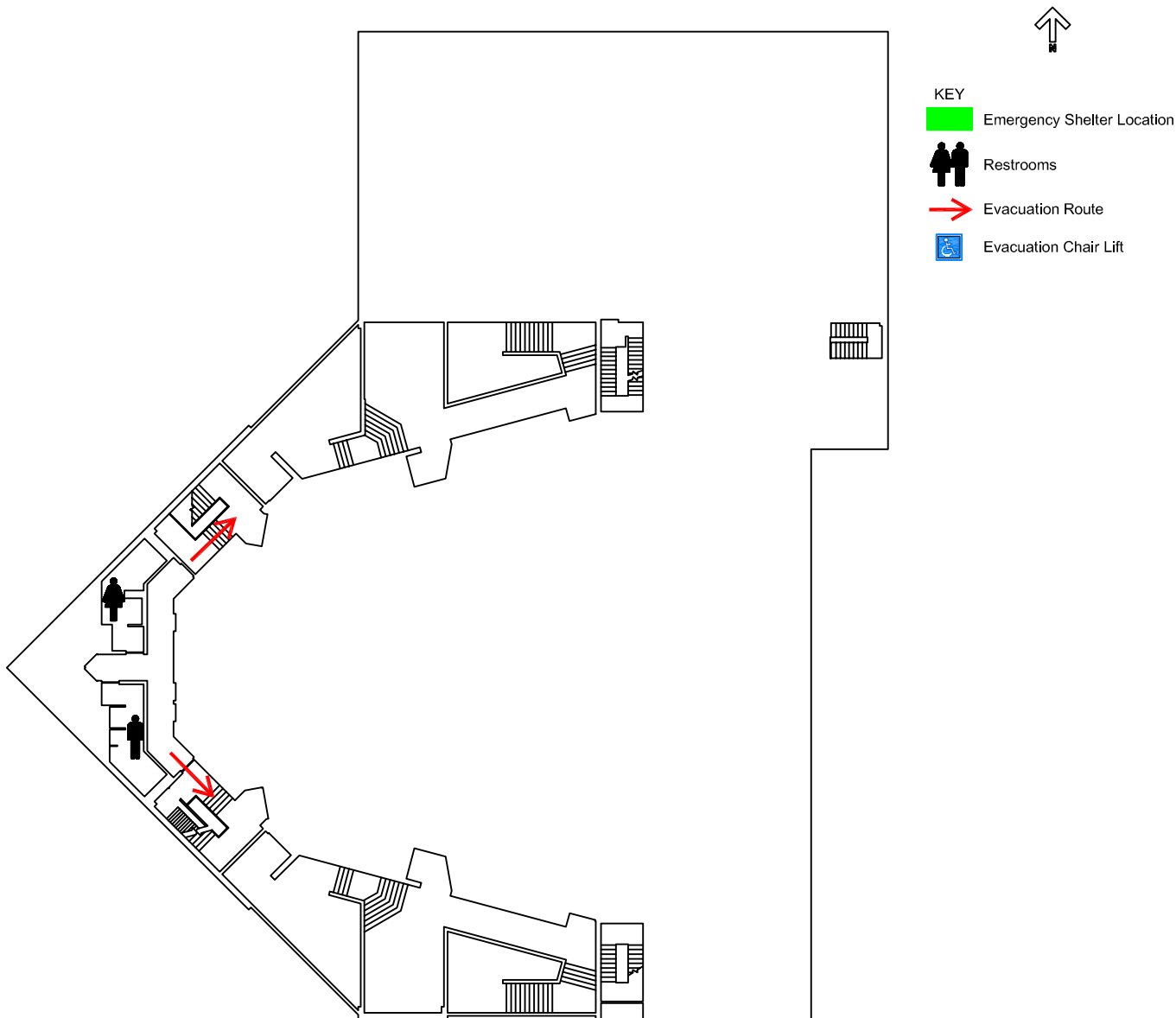
SAFETY GUIDELINES

- Familiarize yourself with the location of exits, alarm pull stations and fire extinguishers.
- Only attempt to control a fire yourself with a fire extinguisher if you have been trained and the fire is small.
- Keep fire doors closed to prevent the spread of smoke and fire.

SEVERE WEATHER

- In the event of a tornado, proceed to the shelter locations. Keep away from exterior doors and windows.

Strayer-Wood Theatre Evacuation Map
Second Floor



EVACUATION GUIDELINES

- In case of fire or other emergency requiring evacuation, activate the nearest fire alarm pull station.
- Exit in a calm and orderly manner. Once you have evacuated to a safe location, immediately call 9-1-1.
- Assist injured persons and if time permits, make sure all doors are closed and hazardous work operations are shut down as you exit.
- Provide assistance to any person needing help evacuating the building.

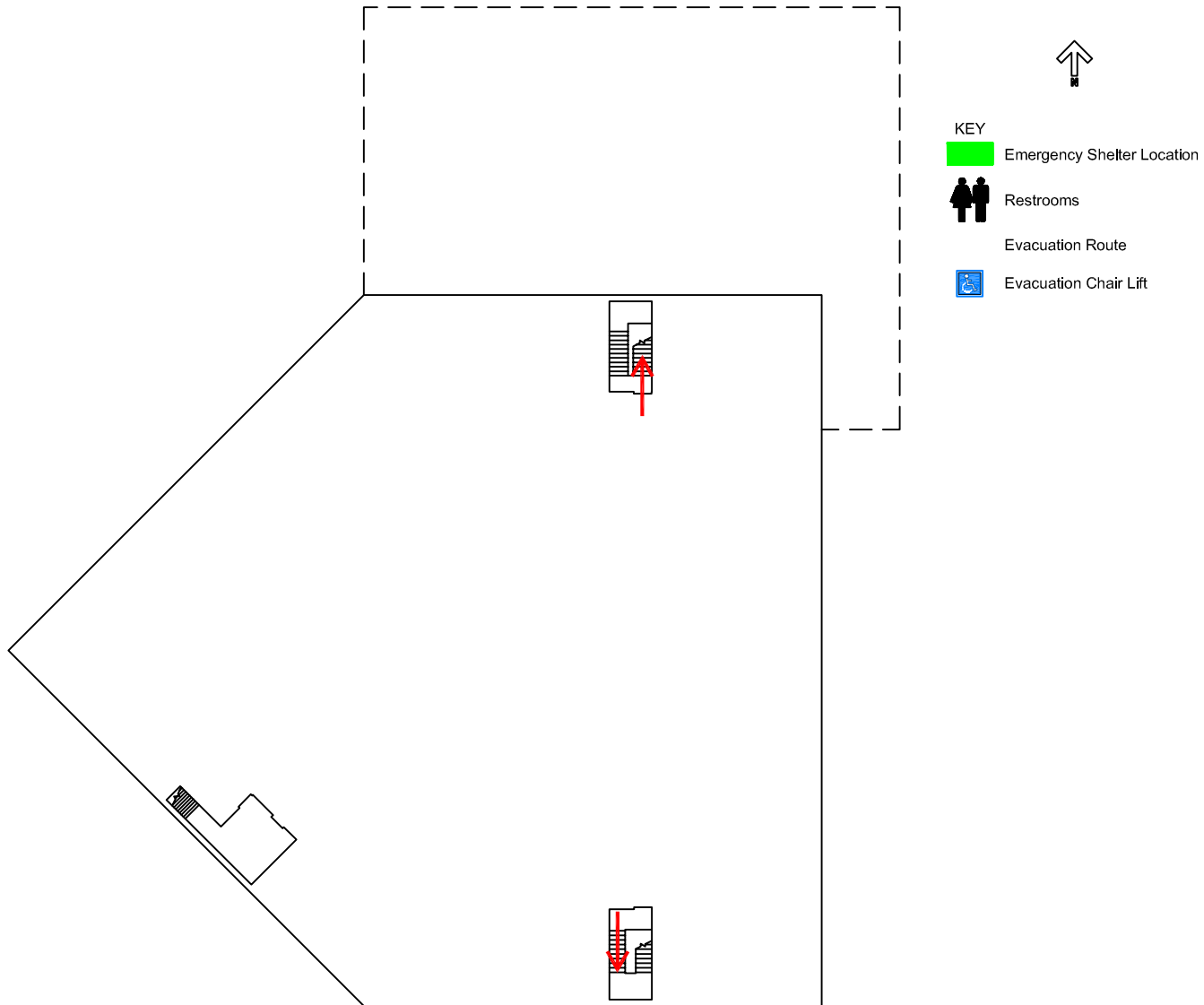
SAFETY GUIDELINES

- Familiarize yourself with the location of exits, alarm pull stations and fire extinguishers.
- Only attempt to control a fire yourself with a fire extinguisher if you have been trained and the fire is small.
- Keep fire doors closed to prevent the spread of smoke and fire.

SEVERE WEATHER

- In the event of a tornado, proceed to the shelter locations. Keep away from exterior doors and windows.

Strayer-Wood Theatre Evacuation Map Third Floor



EVACUATION GUIDELINES

- In case of fire or other emergency requiring evacuation, activate the nearest fire alarm pull station.
- Exit in a calm and orderly manner. Once you have evacuated to a safe location, immediately call 9-1-1.
- Assist injured persons and if time permits, make sure all doors are closed and hazardous work operations are shut down as you exit.
- Provide assistance to any person needing help evacuating the building.

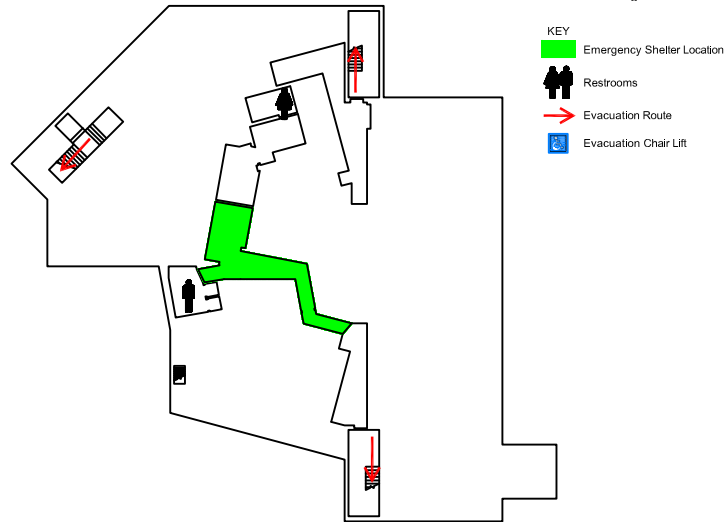
SAFETY GUIDELINES

- Familiarize yourself with the location of exits, alarm pull stations and fire extinguishers.
- Only attempt to control a fire yourself with a fire extinguisher if you have been trained and the fire is small.
- Keep fire doors closed to prevent the spread of smoke and fire.

SEVERE WEATHER

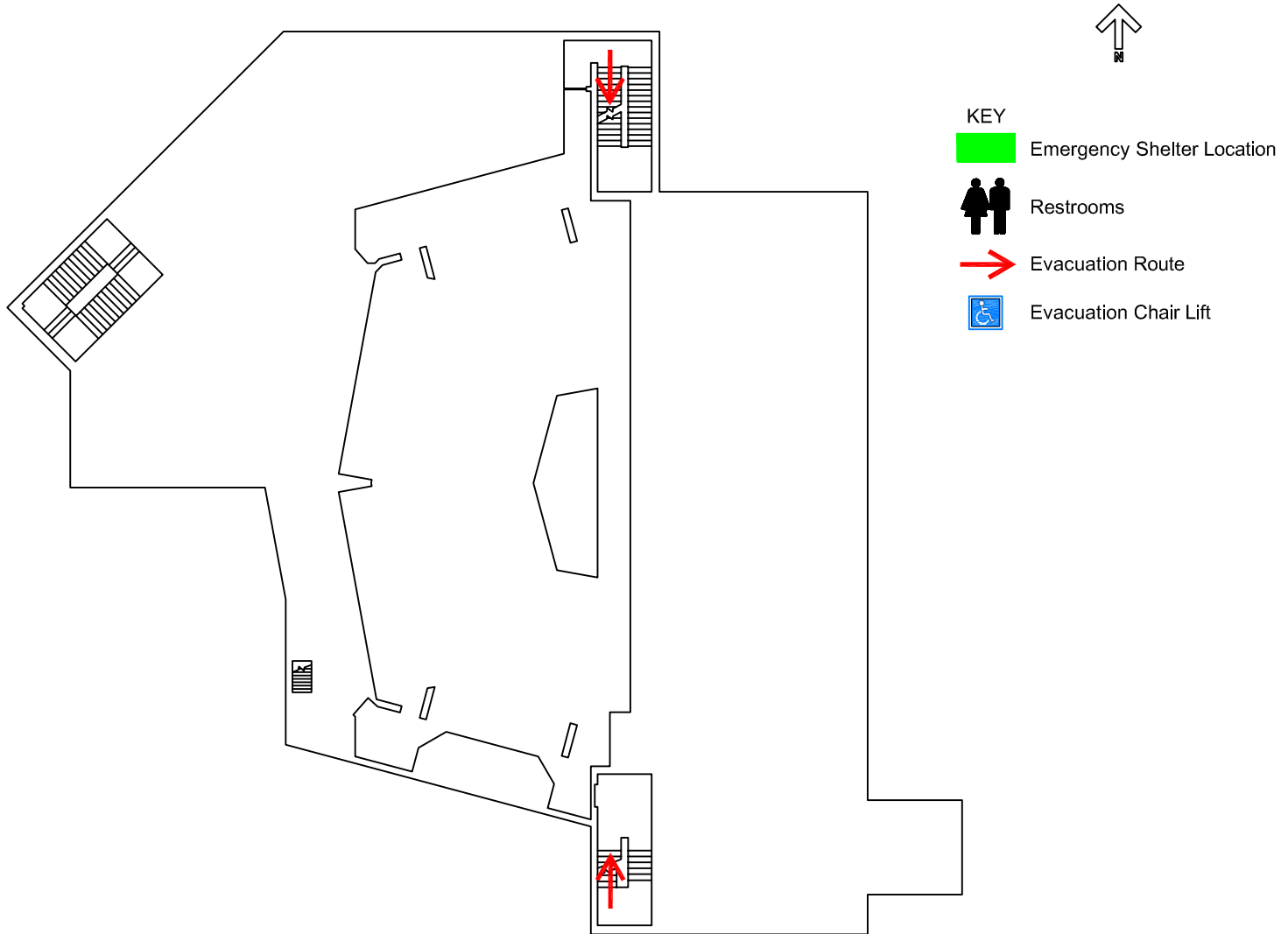
- In the event of a tornado, proceed to the shelter locations. Keep away from exterior doors and windows.

Strayer-Wood Theatre Evacuation Map
Basement Floor



<p><u>EVACUATION GUIDELINES</u></p> <ul style="list-style-type: none"> • In case of fire or other emergency requiring evacuation, activate the nearest fire alarm pull station. • Exit in a calm and orderly manner. Once you have evacuated to a safe location, immediately call 9-1-1. • Assist injured persons and if time permits, make sure all doors are closed and hazardous work operations are shut down as you exit. • Provide assistance to any person needing help evacuating the building. 	<p><u>SAFETY GUIDELINES</u></p> <ul style="list-style-type: none"> • Familiarize yourself with the location of exits, alarm pull stations and fire extinguishers. • Only attempt to control a fire yourself with a fire extinguisher if you have been trained and the fire is small. • Keep fire doors closed to prevent the spread of smoke and fire. <p><u>SEVERE WEATHER</u></p> <ul style="list-style-type: none"> • In the event of a tornado, proceed to the shelter locations. Keep away from exterior doors and windows.
--	--

Strayer-Wood Theatre Evacuation Map Mezzanine Floor



EVACUATION GUIDELINES

- In case of fire or other emergency requiring evacuation, activate the nearest fire alarm pull station.
- Exit in a calm and orderly manner. Once you have evacuated to a safe location, immediately call 9-1-1.
- Assist injured persons and if time permits, make sure all doors are closed and hazardous work operations are shut down as you exit.
- Provide assistance to any person needing help evacuating the building.

SAFETY GUIDELINES

- Familiarize yourself with the location of exits, alarm pull stations and fire extinguishers.
- Only attempt to control a fire yourself with a fire extinguisher if you have been trained and the fire is small.
- Keep fire doors closed to prevent the spread of smoke and fire.

SEVERE WEATHER

- In the event of a tornado, proceed to the shelter locations. Keep away from exterior doors and windows.