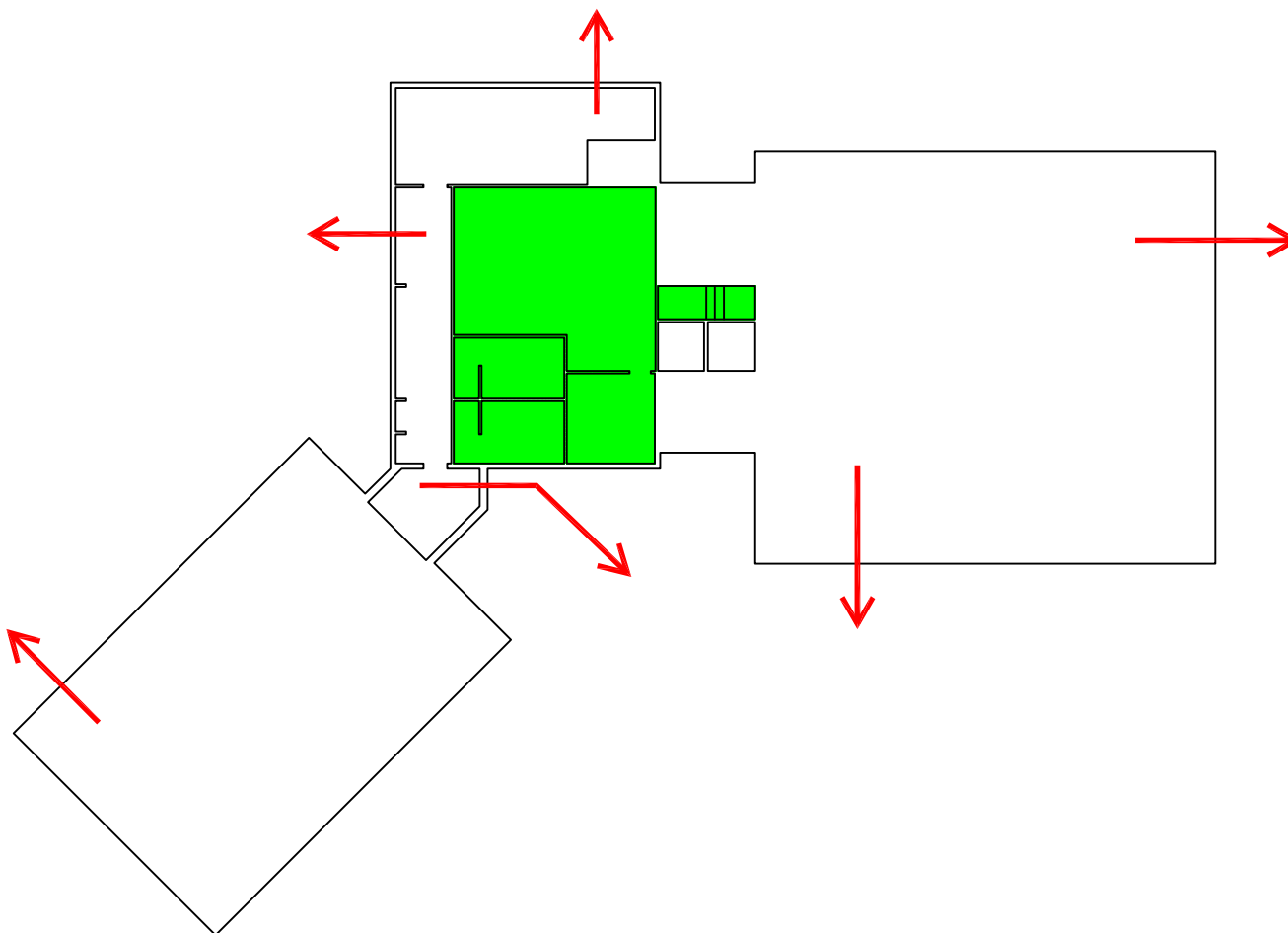




# University Apartment Office Evacuation Map Ground Floor



- KEY**
-  Emergency Shelter Location
  -  Restrooms
  -  Evacuation Route
  -  Evacuation Chair Lift

<p><b><u>EVACUATION GUIDELINES</u></b></p> <ul style="list-style-type: none"> <li>● In case of fire or other emergency requiring evacuation, activate the nearest fire alarm pull station.</li> <li>● Exit in a calm and orderly manner. Once you have evacuated to a safe location, immediately call 9-1-1.</li> <li>● Assist injured persons and if time permits, make sure all doors are closed and hazardous work operations are shut down as you exit.</li> <li>● Provide assistance to any person needing help evacuating the building.</li> </ul>	<p><b><u>SAFETY GUIDELINES</u></b></p> <ul style="list-style-type: none"> <li>● Familiarize yourself with the location of exits, alarm pull stations and fire extinguishers.</li> <li>● Only attempt to control a fire yourself with a fire extinguisher if you have been trained and the fire is small.</li> <li>● Keep fire doors closed to prevent the spread of smoke and fire.</li> </ul> <p><b><u>SEVERE WEATHER</u></b></p> <ul style="list-style-type: none"> <li>● In the event of a tornado, proceed to the shelter locations. Keep away from exterior doors and windows.</li> </ul>
--	--

\*All Hillside Court and Jennings Court Residence Must Go To University Apartments Office For Emergency Shelter